

**Astrel Instruments**

**AST-8300-B**

**uSD Substitution Procedure**

**rev A**

## uSD Substitution Procedure

In the following is described the procedure to correctly substitute the uSD to an AST8300B camera.

Before starting the procedure, remember to save the files that contains data related to the particular camera you're working on, that are /home/astro/apps/filterwheel.dat (the filter wheel calibration data) and /home/astro/astrel8300.cfg (that contains filter names and other info).

These files should be restored after the new uSD is in place.

Step by step procedure:

- 1) The AST8300B must be **OFF**
- 2) Avoid to operate in **ESD** unsafe conditions:
  - a) If possible wear anti-static wrist strap connected to "Earth" (e.g. the chassis of a desktop PC)



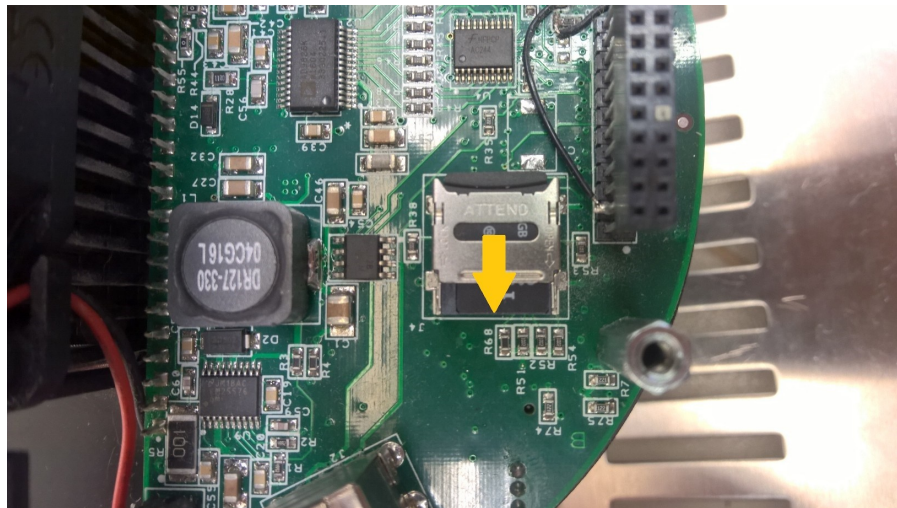
- b) If a) is not applicable:
    - Do **not** wear **synthetic** fabrics
    - Do **not** operate sitting on **fabric** covered **seats**
    - **Discharge** yourself before operating (e.g. touching the chassis of a desktop PC)
- 3) Unscrew the two screws of the Processor Unit cover of the AST8300B



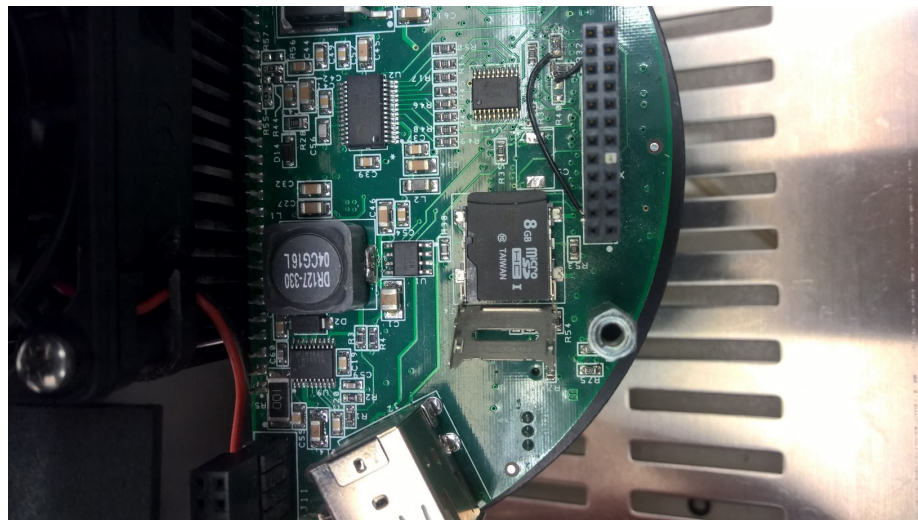
- 4) Open the cover **slowly**, paying attention to the internal WiFi cable (the cover will remaining attached to the Processor Board through this cable). Don't pull the cable as it may get disconnected from the Processor Board. **Note:** in some of the earliest AST8300B cameras, the Processor Unit cover was made of 2 parts: a flat plate (the part with markings and the 2 screws) and a half circular flange (the part with connectors holes and the wifi antenna terminal). For those cameras the procedure is identical apart the cover opening and closing, where you have to pay attention that the flange is correctly positioned inside the grooves located on the camera body and on the flat plate before tightening the screws.



- 5) Unlock the uSD slot sliding its cover as indicated by the arrow in the picture



6) When unlocked the uSD slot cover can be opened



- 7) Remove the old uSD and substitute it with the new one
- 8) Close the uSD slot cover and lock it sliding it in the opposite direction respect to point 5
- 9) Close the Processor Unit cover and screw back the 2 screws to complete the procedure:  
when closing the cover, be careful to put the **WiFi cable** in its original position between the extio and the Ethernet connector. Pay special attention to verify that the wifi cable is correctly connected to the board, like in the picture below



